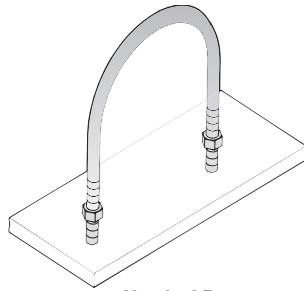
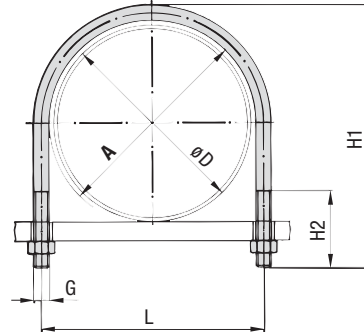


according to **DIN 3570, Type A**



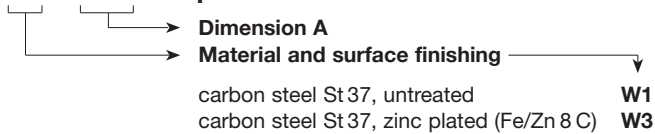
Nominal Bore  
inch



DN	Pipe-O.D. ØD		Round Steel U-Bolt RBD						G		
	mm	inch	A		L		H1			H2	
			mm	inch	mm	inch	mm	inch	mm	inch	
20	25		30		40		70		40		M10 3/8-16UNC
	26,9	3/4		1.18		1.57		2.76			
25	30		38		48		76		50	1.57	
	33,7	1		1.50		1.89		2.99			
32	38		46		56		86		50	1.57	
	42,4	1 1/4		1.81		2.20		3.39			
40	44,5		52		62		92		50	1.57	
	48,3	1 1/2		2.05		2.44		3.62			
50	57		64		76		109		50	1.57	
	60,3	2		2.52		2.99		4.29			
65	76,1	2 1/2	82	3.23	94	3.70	125	4.92	60	1.97	
80	89,9	3	94	3.70	106	4.17	138	5.43	60	1.97	
100	108		120		136		171		60	1.97	
	114,3	4		4.72		5.35		6.73			
125	133		148		164		191		60	1.97	
	139,7	5		5.83		6.46		7.52			
150	159		176		192		217		60	1.97	
	168,3	6		6.93		7.56		8.54			
175	193,7	7 1/2	202	7.95	218	8.58	249	9.80	70	2.36	
200	216		228		248		283		70	2.36	
	219,1	8		8.98		9.76		11.14			
250	267		282		302		334		70	2.36	
	273	10		11.10		11.89		13.15			
300	318		332		352		385		70	2.36	
	323,9	12		13.07		13.86		15.16			
350	355,6	14	378	14.88	402	15.83	435	17.13	70	2.36	
	368										
400	406,4	16	428	16.85	452	17.80	487	19.17	70	2.36	
	419										
500	508		530		554		589		70	2.36	
	521			20.87		21.81		23.19			

### ORDER CODE

**RBDxx A \*\*\* kompl**



**Clamp consisting of:**  
1 x Round Steel U-Bolt  
2 x Nuts DIN EN ISO 4032

**Information**  
Items are supplied non-assembled.

Other materials and surface finishings upon request.