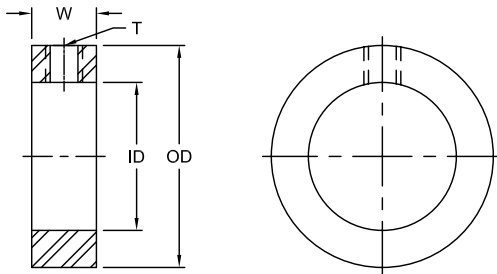


**Shaft Collars**

**Zinc Plated and Stainless Steel**

Lovejoy shaft collars are precision machined for the best possible fit. Standard steel collars are made from highest quality cold finished steel bar stock and zinc plated for corrosion resistance and outstanding appearance. Stainless steel collars are made from type 303 stainless and include a stainless steel set screw. All Lovejoy shaft collars use socket cup point set screws for ease of installation and best possible holding strength. Made in USA.



**Shaft Collar - Zinc and Stainless Dimensional Data**

Size	UPC Number		W in	T Set Screw in	OD in	ID Bore <sup>2</sup> in
	Zinc Plated	Stainless				
LSC-2	17507	17557	1/4	6-32 x 1/8	3/8	1/8
LSC-3	17508	17559	1/4	8-32 x 1/8	7/16	3/16
LSC-4	17509	15761	5/16	10-24 x 1/8	1/2	1/4
LSC-5	17510	17563	5/16	10-32 x 3/16	5/8	5/16
LSC-6	17511	17565	3/8	1/4-20 x 3/16	3/4	3/8
LSC-7	17512	17567	7/16	1/4-20 x 1/4	7/8	7/16
LSC-8	17513	17569	7/16	1/4-20 x 1/4	1	1/2
LSC-9	17514	17571	7/16	1/4-20 x 1/4	1	9/16
LSC-10	17515	17573	1/2	5/16- 18 x 1/4	1-1/8	5/8
LSC-11	17516	17575	9/16	5/16-18 x 1/4	1-1/4	11/16
LSC-12	17517	17577	9/16	5/16-18 x 1/4	1-1/4	3/4
LSC-13	17518	17579	9/16	5/16-18 x 1/4	1-1/4	13/16
LSC-14	17519	17581	9/16	5/16-18 x 5/16	1-1/2	7/8
LSC-15	17520	17583	9/16	5/16-24 x 1/4	1-1/2	15/16
LSC-16	17521	17585	5/8	5/16-24 x 1/4	1-1/2	1
LSC-17	17522	17587	5/8	5/16-18 x 5/16	1-3/4	1-1/16
LSC-18	17523	17589	5/8	5/16-18 x 5/16	1-3/4	1-1/8
LSC-19	17524	17591	11/16	3/8-16 x 3/8	2	1-3/16
LSC-20	17525	17593	11/16	3/8-16 x 3/8	2	1-1/4
LSC-21	17526	17595	11/16	3/8-16 x 3/8	2-1/8	1-5/16
LSC-22	17527	17597	3/4	3/8-16 x 3/8	2-1/8	1-3/8
LSC-23	17528	17599	3/4	3/8-16 x 3/8	2-1/4	1-7/16
LSC-24	17529	17601	3/4	3/8-16 x 3/8	2-1/4	1-1/2
LSC-25	17530	17603	13/16	3/8-16 x 3/8	2-1/2	1-9/16
LSC-26	17531	17605	13/16	3/8-16 x 3/8	2-1/2	1-5/8
LSC-27	17532	17607	13/16	3/8-16 x 3/8	2-1/2	1-11/16
LSC-28	17533	17609	7/8	1/2-13 x 1/2	2-5/8	1-3/4
LSC-29	17534	17611	7/8	1/2-13 x 1/2	2-3/4	1-13/16
LSC-30	17535	17613	7/8	1/2-13 x 1/2	2-3/4	1-7/8
LSC-31	17536	17615	7/8	1/2-13 x 1/2	3	1-15/16
LSC-32	17537	17617	7/8	1/2-13 x 1/2	3	2
LSC-33	17538	—	7/8	1/2-13 x 1/2	3	2-1/16
LSC-34	17539	17621	7/8	1/2-13 x 1/2	3	2-1/8
LSC-35	17540	—	15/16	1/2-13 x 1/2	3-1/4	2-3/16
LSC-36	17541	17625	15/16	1/2-13 x 1/2	3-1/4	2-1/4
LSC-37	17542	—	15/16	1/2-13 x 1/2	3-1/4	2-5/16
LSC-38	17543	17629	15/16	1/2-13 x 1/2	3-1/4	2-3/8
LSC-39	17544	—	1	1/2-13 x 1/2	3-1/2	2-7/16
LSC-40	17545	17633	1	1/2-13 x 1/2	3-1/2	2-1/2
LSC-41	17546	—	1	1/2-13 x 1/2	3-3/4	2-9/16
LSC-42	17547	—	1-1/8	1/2-13 x 1/2	4	2-5/8
LSC-43	17548	—	1-1/8	1/2-13 x 1/2	4	2-11/16
LSC-44	17549	—	1-1/8	1/2-13 x 1/2	4	2-3/4
LSC-45	17550	—	1-1/8	1/2-13 x 1/2	4	2-13/16
LSC-46	17551	—	1-1/8	1/2-13 x 1/2	4	2-7/8
LSC-47	17552	—	1-1/8	1/2-13 x 1/2	4	2-15/16
LSC-48	17553	—	1-1/8	1/2-13 x 1/2	4	3

Notes: ■ Bore Tolerance LSC-2 through LSC-16,+.003-.000 Bore Tolerance LSC-17 through LSC-48,+.003-.001.  
■ When referencing the Lovejoy UPC number in this table, include 685144 as a prefix to the number shown.

**Shaft Collars**

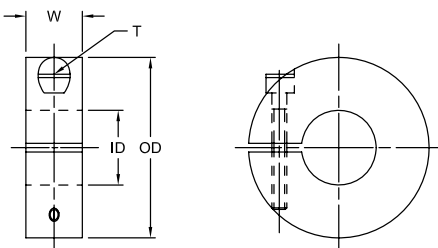
**One-Piece**

Lovejoy One-Piece split shaft collars are designed to fully engage the shaft without marring or causing other shaft damage. Collars are made from the highest quality bar stock steel and are black oxide finished for corrosion resistance and outstanding appearance. All Lovejoy shaft collars use socket cup point set screws for ease of installation and best possible holding strength.

**Features**

- Equally effective on both hard and soft shafts
- Made of 12L14 Mild Steel
- Hex Socket, Cup Point, 3A Thread Screws
- Made in the U.S.A.
- Tolerances:

Bore Diameter - +.003, -.000 in  
 Outside Diameter - +.000, -.015 in  
 Width - + .015 in



One-Piece Split Shaft Collar

**Shaft Collar - One Piece Dimensional Data**

Size	UPC Number	W in	T Clamp Screw	OD in	ID Bore in
SC1-2	63200	5/16	4-40 x 3/8	11/16	1/8
SC1-3	63201	5/16	4-40 x 3/8	11/16	3/16
SC1-4	63202	5/16	4-40 x 3/8	11/16	1/4
SC1-5	63203	5/16	4-40 x 3/8	11/16	5/16
SC1-6	63204	3/8	6-32 x 3/8	7/8	3/8
SC1-7	63205	3/8	6-32 x 3/8	15/16	7/16
SC1-8	63206	3/8	6-32 x 3/8	1-1/8	1/2
SC1-9	63207	13/32	8-32 x 1/2	1-5/16	9/16
SC1-10	63208	7/16	10-32 x 1/2	1-5/16	5/8
SC1-11	63209	1/2	10-32 x 1/2	1-1/2	11/16
SC1-12	63210	1/2	1/4-28 x 5/8	1-1/2	3/4
SC1-13	63211	1/2	1/4-28 x 5/8	1-5/8	13/16
SC1-14	63212	1/2	1/4-28 x 5/8	1-5/8	7/8
SC1-15	63213	1/2	1/4-28 x 5/8	1-3/4	15/16
SC1-16	63214	1/2	1/4-28 x 5/8	1-3/4	1
SC1-17	63215	1/2	1/4-28 x 5/8	1-7/8	1-1/16
SC1-18	63216	1/2	1/4-28 x 3/4	1-7/8	1-1/8
SC1-19	63217	1/2	1/4-28 x 3/4	2-1/16	1-3/16
SC1-20	63218	1/2	1/4-28 x 3/4	2-1/16	1-1/4
SC1-21	63219	9/16	1/4-28 x 3/4	2-1/4	1-5/16
SC1-22	63220	9/16	1/4-28 x 3/4	2-1/4	1-3/8
SC1-23	63221	9/16	1/4-28 x 3/4	2-1/4	1-7/16
SC1-24	63222	9/16	1/4-28 x 3/4	2-3/8	1-1/2
SC1-25	63223	9/16	1/4-28 x 3/4	2-3/8	1-9/16
SC1-26	63224	11/16	5/16-24 x 1	2-5/8	1-5/8
SC1-27	63225	11/16	5/16-24 x 1	2-3/4	1-11/16
SC1-28	63226	11/16	5/16-24 x 1	2-3/4	1-3/4
SC1-30	63227	11/16	5/16-24 x 1	2-7/8	1-7/8
SC1-31	63228	5/8	5/16-24 x 1	3	1-15/16
SC1-32	63229	11/16	5/16-24 x 1	3	2
SC1-34	63230	3/4	5/16-24 x 1	3-1/4	2-1/8
SC1-35	63231	3/4	5/16-24 x 1	3-1/4	2-3/16
SC1-36	63232	3/4	5/16-24 x 1	3-1/4	2-1/4
SC1-38	63233	3/4	5/16-24 x 1	3-1/2	2-3/8
SC1-39	63234	3/4	5/16-24 x 1	3-1/2	2-7/16
SC1-40	63235	7/8	3/8-24 x 1-1/4	3-3/4	2-1/2
SC1-42	63236	7/8	3/8-24 x 1-1/4	3-7/8	2-5/8
SC1-43	63237	7/8	3/8-24 x 1-1/4	4	2-11/16
SC1-44	63238	7/8	3/8-24 x 1-1/4	4	2-3/4
SC1-46	63239	7/8	3/8-24 x 1-1/4	4-1/4	2-7/8
SC1-47	63240	7/8	3/8-24 x 1-1/4	4-1/4	2-15/16
SC1-48	63241	7/8	3/8-24 x 1-1/4	4-1/4	3

Note: ■ When referencing the Lovejoy UPC number in this table, include 685144 as a prefix to the number shown.

SP

**Shaft Collars**

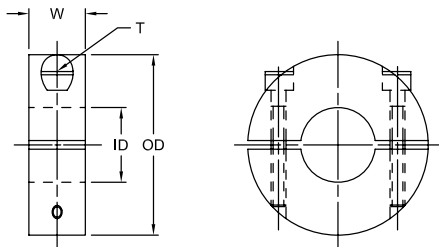
**Two-Piece**

Lovejoy Two-Piece split shaft collars are designed to fully engage the shaft without marring or causing other shaft damage. Two piece collars are easily installed without the need for major disassembly, saving both man-hours and machine downtime.

Collars are made from the highest quality bar stock steel and black oxide finished for corrosion resistance and outstanding appearance. All Lovejoy shaft collars use socket cup point set screws for ease of installation and best possible holding strength. Contact customer service for price and availability.

**Features**

- Equally effective on both hard and soft shafts
- Made of 12L14 Mild Steel
- Hex Socket, Cup Point, 3A Thread Screws
- Made in the U.S.A.
- Tolerances:
  - Bore Diameter - +.003, -.000 in
  - Outside Diameter - +.000, -.015 in
  - Width - +.015 in



**Two-Piece Split Shaft Collar**

**Shaft Collar - Two Piece Dimensional Data**

Size	UPC Number	W in	T Clamp Screw	OD in	ID Bore in
SC2-2	63200	5/16	4-40 x 3/8	11/16	1/8
SC2-3	63201	5/16	4-40 x 3/8	11/16	3/16
SC2-4	63202	5/16	4-40 x 3/8	11/16	1/4
SC2-5	63203	5/16	4-40 x 3/8	11/16	5/16
SC2-6	63204	3/8	6-32 x 3/8	7/8	3/8
SC2-7	63205	3/8	6-32 x 3/8	15/16	7/16
SC2-8	63206	3/8	6-32 x 3/8	1-1/8	1/2
SC2-9	63207	13/32	8-32 x 1/2	1-5/16	9/16
SC2-10	63208	7/16	10-32 x 1/2	1-5/16	5/8
SC2-11	63209	1/2	10-32 x 1/2	1-1/2	11/16
SC2-12	63210	1/2	1/4-28 x 5/8	1-1/2	3/4
SC2-13	63211	1/2	1/4-28 x 5/8	1-5/8	13/16
SC2-14	63212	1/2	1/4-28 x 5/8	1-5/8	7/8
SC2-15	63213	1/2	1/4-28 x 5/8	1-3/4	15/16
SC2-16	63214	1/2	1/4-28 x 5/8	1-3/4	1
SC2-17	63215	1/2	1/4-28 x 5/8	1-7/8	1-1/16
SC2-18	63216	1/2	1/4-28 x 3/4	1-7/8	1-1/8
SC2-19	63217	1/2	1/4-28 x 3/4	2-1/16	1-3/16
SC2-20	63218	1/2	1/4-28 x 3/4	2-1/16	1-1/4
SC2-21	63219	9/16	1/4-28 x 3/4	2-1/4	1-5/16
SC2-22	63220	9/16	1/4-28 x 3/4	2-1/4	1-3/8
SC2-23	63221	9/16	1/4-28 x 3/4	2-1/4	1-7/16
SC2-24	63222	9/16	1/4-28 x 3/4	2-3/8	1-1/2
SC2-25	63223	9/16	1/4-28 x 3/4	2-3/8	1-9/16
SC2-26	63224	11/16	5/16-24 x 1	2-5/8	1-5/8
SC2-27	63225	11/16	5/16-24 x 1	2-3/4	1-11/16
SC2-28	63226	11/16	5/16-24 x 1	2-3/4	1-3/4
SC2-30	63227	11/16	5/16-24 x 1	2-7/8	1-7/8
SC2-31	63228	5/8	5/16-24 x 1	3	1-15/16
SC2-32	63229	11/16	5/16-24 x 1	3	2
SC2-34	63230	3/4	5/16-24 x 1	3-1/4	2-1/8
SC2-35	63231	3/4	5/16-24 x 1	3-1/4	2-3/16
SC2-36	63232	3/4	5/16-24 x 1	3-1/4	2-1/4
SC2-38	63233	3/4	5/16-24 x 1	3-1/2	2-3/8
SC2-39	63234	3/4	5/16-24 x 1	3-1/2	2-7/16
SC2-40	63235	7/8	3/8-24 x 1-1/4	3-3/4	2-1/2
SC2-42	63236	7/8	3/8-24 x 1-1/4	3-7/8	2-5/8
SC2-43	63237	7/8	3/8-24 x 1-1/4	4	2-11/16
SC2-44	63238	7/8	3/8-24 x 1-1/4	4	2-3/4
SC2-46	63239	7/8	3/8-24 x 1-1/4	4-1/4	2-7/8
SC2-47	63240	7/8	3/8-24 x 1-1/4	4-1/4	2-15/16
SC2-48	63241	7/8	3/8-24 x 1-1/4	4-1/4	3

Note: ■ When referencing the Lovejoy UPC number in this table, include 685144 as a prefix to the number shown.